



SUNNY





## A BOLD, MODERN LEAP FORWARD

It's everything you're looking for and more. Nissan SUNNY is here to offer more style, safety and connectivity to your world than ever before. With agile handling, impressive efficiency and practicality with a punch, SUNNY ensures you get noticed everywhere for all the right reasons.



Sharp, striking body lines and a unique floating roof.



LED lighting for brilliantly clear visibility. Wide beam with auto headlamp and follow-me-home features mean that you can always see and be seen.



Exclusive to the Nissan SUNNY range are 17" alloy wheels that put a new spin on style, completing an undeniably premium package from every angle.



Side mirrors with LED indicators.

# MAKE EVERY MOMENT YOUR TIME TO SHINE

Like nothing else in its class, the Nissan SUNNY makes aggressive look impressive. A wider stance, a lower profile and more reasons to make a lasting first impression.



## NISSAN ADVANCED SAFETY FEATURES

You're only human so it's nice to have a little backup when something unexpected happens. Nissan SUNNY comes packed with a host of safety features designed to surround you and your loved ones with confidence on every drive.

The Nissan SUNNY is packed with innovation that looks out for you – even in reverse. The rear-view monitor system with parking sensors, allows you to parallel and garage park without flinching. By displaying a predicted vehicle path that's linked to your steering inputs as you manoeuvre backwards, the crystal clear monitor show you the perfect path to park, every time.



## BETTER PERFORMANCE, GREAT MILEAGE

There's a reason why Nissan SUNNY brings more fun and excitement to every drive: Thoughtful tech that makes a difference from the moment you get in. From Intelligent Key Push Button Start, to a CVT gearbox that puts you in the right gear at the right time, allowing you to merge and manoeuvre with ease.

POWER

88kW

TORQUE

149Nm

AUTO TRANSMISSION

5-Speed

The Nissan SUNNY engine has variable valve timing that continuously adjusts output to deliver no-nonsense acceleration with exceptional mileage. All you need and more to make the most out of every journey every time.

Control At Your Fingertips

Ergonomical D-Shaped Steering Wheel

Automatic Temperature Control

Seamlessly connect to your compatible phone, and your world. A unique "floating" touch-screen puts your every move on full display, while steering wheel controls give you easy access at your fingertips.

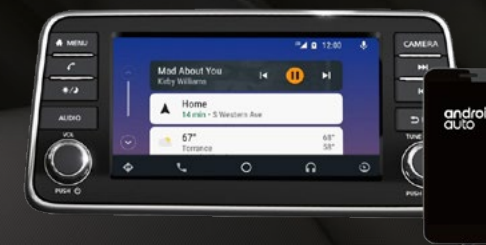
## A MORE PREMIUM, COMFORTABLE AND CONNECTED RIDE

A sporty D-shaped steering wheel and leather seats with distinctive stitching are finished in a cockpit with bold chrome and glossy black treatments. The Nissan SUNNY offers soft pad panelling and exceptional quality materials throughout the cabin. Control the infotainment system and smartphone audio through the Bluetooth® hands-free system, without taking your hands off the wheel.



APPLE CARPLAY®

People to see? Places to be? Just ask Siri®. Equipped with Siri® voice control, Apple CarPlay® brings on board to your Sunny your contacts, favorite messaging apps, Apple Music® playlists, Apple Maps, and more. Simply plug in your compatible iPhone® and go.



ANDROID AUTO™

Know where you're going and when. Google Maps helps you navigate to your next appointment, while your Google Assistant keeps you on top of your schedule. Choose a song, change your destination, or respond to a text with your hands on the wheel using the hundreds of available voice commands.

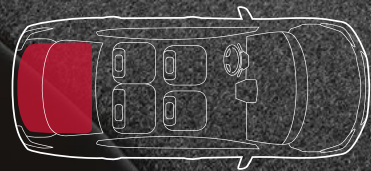


## UNEXPECTED FEATURES THAT MAKE YOUR DAY

The Nissan SUNNY is a car built with everyone in mind. Three USB ports means ample charging points for the entire family, so that you're always charged and always connected.

## SPACE TO BRING YOUR WORLD ALONG FOR THE RIDE

Improved head room in zero gravity sets, more knee room for rear passengers and multiple smart storage compartments for ultimate convenience.



BOOT CAPACITY  
**482L**

When you need more room for cargo, the 60/40 split fold-down rear seats let you add all your gear, with a passenger still aboard for ultimate convenience.

## CARGO SPACE LIKE NO OTHER

Like the legendary practicality found in ALMERA, Nissan SUNNY excels in the cargo department with up to 482L of trunk space, pass-through access for longer items, 60/40 split rear seats and multiple smart storage compartments throughout the cabin. In addition, SUNNY provides a lower, wider opening trunk for even easier access.





# TURN ALL NEW INTO ALL YOU

The Nissan SUNNY is available in a range of dynamic colours and trim variations. Please check your local dealership for availability and options.



Black S - KH3



Gray M - KAD



Silver M - K23



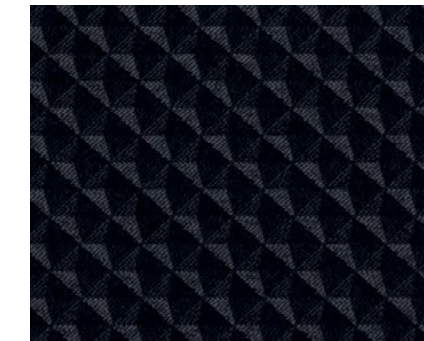
White - QM1



Blue P - RAY



Red PM - NAH



Charcoal Cloth



Charcoal Leather

# NISSAN SUNNY

## SPECIFICATIONS & FEATURES

MODEL		BASE 5MT	MID CVT	HIGH CVT
Body Type		Sedan	Sedan	Sedan
Transmission		5-speed MT	CVT	CVT
<b>ENGINE AND PERFORMANCE</b>				
Maximum Power	Kw	88	88	88
Maximum Torque	Nm	149	149	149
Fuel Type		Petrol	Petrol	Petrol
<b>DIMENSIONS</b>				
Overall Length of Vehicle	mm	4495	4495	4495
Overall Width of Vehicle	mm	1740	1740	1740
Overall Height of Vehicle	mm	1465	1465	1465
Wheelbase	mm	2620	2620	2620
<b>WHEELS/TYRES</b>				
Wheel Size/Type		15" Steel	16" Alloy	17" Alloy
Wheel Dimensions (Front/Rear)		195/65 R15	205/55 R16	205/50 R17
Spare Wheel		Full Size	Full Size	Full Size
Brake type - Front discs, rear drums		Standard	Standard	Standard
<b>SAFETY</b>				
Airbags		Driver and Passenger	Driver and Passenger	Driver and Passenger
Seatbelts Front		3 Point, Single Pretentioner with Load Limiter + Height Adjust	3 Point, Single Pretentioner with Load Limiter + Height Adjust	3 Point, Single Pretentioner with Load Limiter + Height Adjust
Seatbelts Rear		3 point (Left/Right/Centre)	3 point (Left/Right/Centre)	3 point (Left/Right/Centre)
Seatbelt Reminder		Driver Only	Driver Only	Driver Only
ABS + EBD + Brake Assist (BA)		Standard	Standard	Standard
Parking Assist		N/A	Rear Parking Sensors + Rear View Camera	Rear Parking Sensors + Rear View Camera
Child Anchors (ISOFIX + Tether)		Standard	Standard	Standard
High Mounted Stop Lamp		Standard	Standard	Standard
Immobilizer		Standard	N/A	N/A
Immobilizer + Theft Alarm		N/A	Standard	Standard
<b>EXTERIOR</b>				
Outside Door Handle		Black	Body Colour	Body Colour
Exterior Rear View Mirror		Black Colour + Manual Folding + Manual Adjust	Body Colour + Manual Folding + Electric Adjust	Body Colour + Manual Folding + Electric Adjust + Turn Signal
Rear Spoiler		N/A	N/A	Standard
<b>COMFORT &amp; CONVENIENCE</b>				
Headlamp		Halogen	LED + LED Signature Light	LED + LED Signature Light
Auto Light + Auto Hazard + Delay Timer Function + Welcome Function		N/A	Standard	Standard
Interior Rearview Mirror		Manual Anti-dazzling	Manual Anti-dazzling	Manual Anti-dazzling
Front Wiper		Variable Intermittent & Mist Wipe	Variable Intermittent & Mist Wipe	Variable Intermittent & Mist Wipe
Front Fog-Lamp		N/A	Standard	Standard
Air Conditioner		Manual	Manual	Full Auto

# NISSAN SUNNY

## SPECIFICATIONS & FEATURES

MODEL		BASE 5MT	MID CVT	HIGH CVT
<b>COMFORT &amp; CONVENIENCE (CONTINUED)</b>				
Audio		Standard Audio + USB + AUX	7" Display Audio + USB + AUX	7" Display Audio + USB + AUX
Speakers		4	4	6
Handsfree Bluetooth		Standard	Standard	Standard
Seat Upholstery		Cloth	Cloth	Leather
Driver's Seat Function		Slide & Reclining; & Lifter	Slide & Reclining; & Lifter	Slide & Reclining; & Lifter
Driver Seat Armrest		N/A	Driver Armrest	Driver Armrest
Passenger Seat		Manual Slide & Reclining	Manual Slide & Reclining	Manual Slide & Reclining
Rear Seat		Bench Seat	Bench Seat	Split (60/40)
Rear Seat Armrest		N/A	N/A	Center Armrest + 2 cupholders
Luggage Room / Trunk Lamp		Standard	Standard	Standard
<b>DRIVER'S AREA</b>				
Tachometer		Standard	Standard	Standard
Steering Wheel		Urethane	Urethane	Leather
Powered & Tilt Steering Wheel		Standard	Standard	Standard
Steering Wheel Controls		Audio + Handsfree Bluetooth	Audio + Handsfree Bluetooth + Cruise Control	Audio + Handsfree Bluetooth + Cruise Control
*Power Door Lock - Driver with Speed Sensitive Auto Door Lock + Impact Sensing Unlock*		Standard	Standard	Standard
Cruise Control		N/A	Standard	Standard
Keyless Entry		N/A	N/A	Intelligent Key
Push Engine Start		N/A	N/A	Standard
Key with Remote Entry System		With Immobilizer	With Immobilizer + Panic Alarm + Trunk Opener	With Immobilizer + Panic Alarm + Trunk Opener
Power Window		Front & Rear	Front & Rear	Front & Rear
Room Lamp		Front & Rear	Front & Rear	Front & Rear
Cup Holder		2x Front	2x Front	2x Front + 2x Rear
Glovebox with Lid		Standard	Standard	Standard
Sunvisor		Driver (with vanity mirror & strap card) + Passenger (with vanity mirror)	Driver (with vanity mirror & strap card) + Passenger (with vanity mirror)	Driver (with vanity mirror & strap card) + Passenger (with vanity mirror)
Socket Accessory		1x 12V power outlet + 3x USB	1x 12V power outlet + 3x USB	1x 12V power outlet + 3x USB

### Legal notice

Every effort has been made to ensure that the contents of this brochure is correct at the time of going to print (July 2022). This brochure may be produced featuring prototype or accessorised vehicles exhibited at motorshows and in accordance with the company's policy of continuously improving its products. Nissan Africa reserves the right to change the specifications and the vehicles described and shown in this brochure at any time. Nissan dealers will be informed of any such modifications as quickly as possible. Please check with your local Nissan dealer to receive the most up-to-date information. Due to the limitations of the printing process used, the colours shown in this brochure may differ slightly from the actual colours of the paint and interior trim material used. All rights reserved. Reproduction in whole or part of this brochure without the written permission from Nissan is forbidden.

### Nissan's commitment to quality

To provide all customers with a consistently high level of quality, Nissan applies the same standards worldwide, to ensure that all Nissan owners enjoy peace of mind for the lives of their vehicles. The approach is based on quality from the customer's perspective on three key elements: First, the expectation of a smooth driving experience with complete peace of mind. Second, the intangible appeal of a vehicle, its power to captivate and excite, with features that capture attention and imagination. Third, the level of attentiveness and service during the sales process, and long after the sale is concluded.

### Nissan's commitment to the environment

Nissan's environmental philosophy embraces people, vehicles and nature. In the pursuit of a sustainable mobile society, the Nissan Green Program aims to reduce the environmental impact of Nissan vehicles at every stage of the vehicle life cycle, while corporate activities address environmental challenges.

**NISSAN**  
**AFTERSALES**  
OUR PROMISE. YOUR EXPERIENCE

